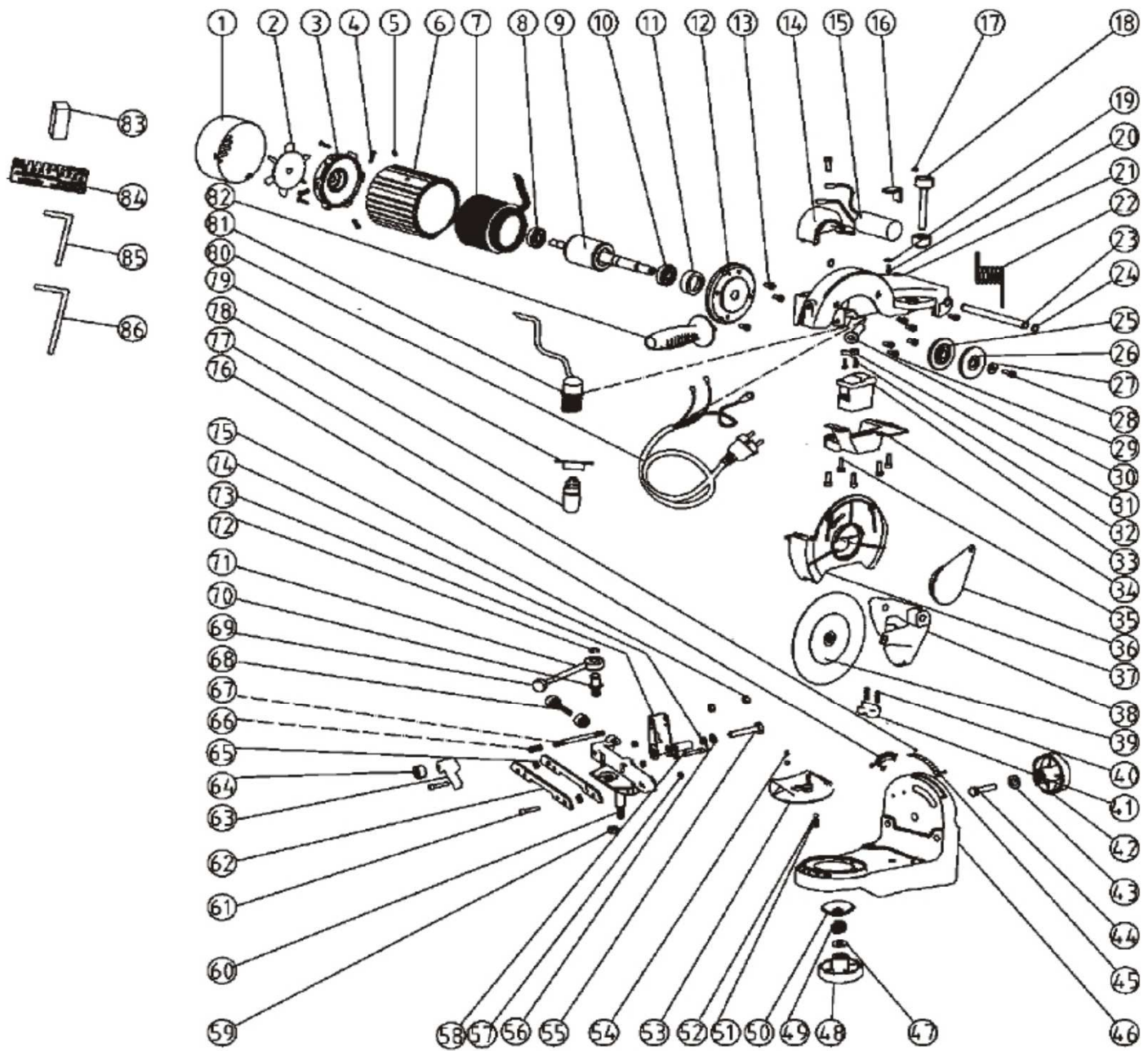


310056  
PRS660



Part No.	Description	Quantity	Part No.	Description	Quantity
1	fan cover	1	44	bolt M10x40	1
2	fan	1	45	nameplate	1
3	motor cover	1	46	base plate	1
4	screw M4x8	1	47	washer $\varnothing 10 \times \varnothing 20 \times 2$	1
5	screw M5x5	1	48	clamp wheel M10	1
6	motor housing	1	49	spring $\varnothing 2 \times \varnothing 18 \times 10$	1
7	stator	1	50	washer	1
8	bearing (6200 ZZ)	1	51	spring $\varnothing 0.6 \times \varnothing 5 \times 16$	1
9	rotor	1	52	steel ball $\varnothing 5$	2
10	bearing (6002 ZZ)	1	53	rotary table II	1
11	anti-vibration ring	1	54	spring $\varnothing 0.6 \times \varnothing 5 \times 10$	1
12	motor cover	1	55	screw M8x45	1
13	screw M4x12	1	56	washer $\varnothing 8 \times \varnothing 16 \times 1.5$	1
14	lamp cover	1	57	nut M5x4	1
15	capacitor	1	58	sheath	1
16	fixed position piece	1	59	nut M8x6	1
17	screw M3x8	1	60	rotary table I	1
18	set seew M8x66	1	61	screw M5x25	1
19	washer $\varnothing 5$	1	62	guicle	2
20	screw M5x8	1	63	chain stop	1
21	swing arm	1	64	nut M6	1
22	spring	1	65	washer $\varnothing 5.2 \times \varnothing 11 \times 2.5$	1
23	axis	1	66	spring $\varnothing 0.3 \times \varnothing 7.5 \times 17$	1
24	limiter ring	1	67	fix stopper	1
25	flange	1	68	mounting screw M6x60	1
26	flange	1	69	mounting ball	1
27	washer	1	70	axle	1
28	screw M6x16	1	71	mounting handle	1
29	screw M5x12	1	72	circlip	1
30	cable tube	1	73	bracket	1
31	cable clamp	1	74	spring	1
32	screw M4x12	1	75	screw M6x5	1
33	switch	1	76	nameplate	1
34	switch enclosure	1	77	rivet	1
35	screw M5x20	1	78	lamp	1
36	lateral guard	1	79	coupling	1
37	grinding disk guard	1	80	cable	1
38	joint	1	81	lamp holder	1
39	grinding disk	1	82	holder	1
40	screw M3x8	1	83	pull-off stone	1
41	chain wheel clamp	1	84	sharpening block	1
42	clamp wheel	1	85	wrench 04	1
43	washer	1	86	wrench 05	1